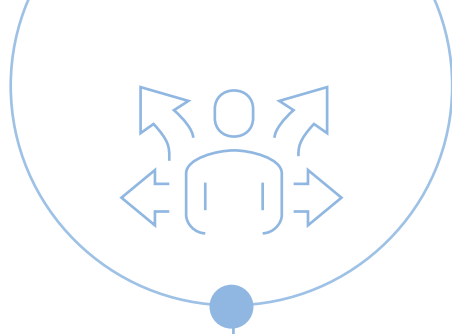




RAPIDS

The case for a
**BETTER MENTAL
HEALTH ASSESSMENT**



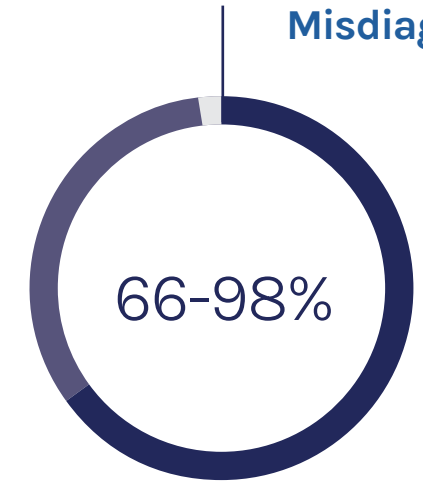
EARLY INTERVENTION, ACCURATE DIAGNOSIS, AND PERSONALIZED TREATMENT CHOICES CAN **DRAMATICALLY IMPACT THE COURSE OF A MENTAL ILLNESS.**

Successful outcomes for mental illness hinge on:

- Diagnosis based on validated clinical scales
- Personalized, empirically-validated treatment choices
- Earlier access to psychiatric expertise
- Minimizing delays

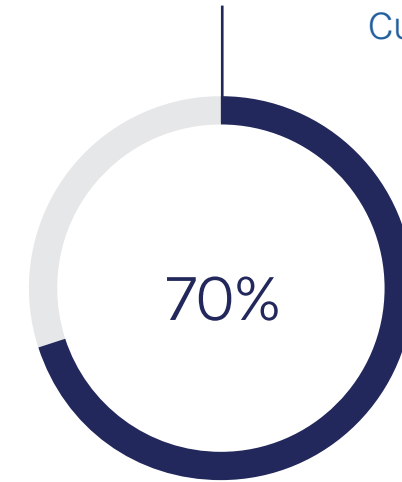
Early, **effective psychiatric treatment** has been associated with:

- Reduced suffering for patients and families
- Fewer episodes and reduced illness severity
- Improved quality of life and functioning
- Reduced financial burden



Misdiagnosis is common in primary care settings.

Misdiagnosis rates range from 66% for major depressive disorder to 98% for social anxiety disorder in primary care.¹



Current approaches to treatment are **often ineffective.**

70% of patients don't respond to their first treatment. 30% still won't after their fourth.²



Early detection and treatment for **mental health is possible.**



Until mental illnesses are diagnosed and treated effectively, people will not recover as fully or as quickly as they otherwise could. Technology can make this happen at scale.

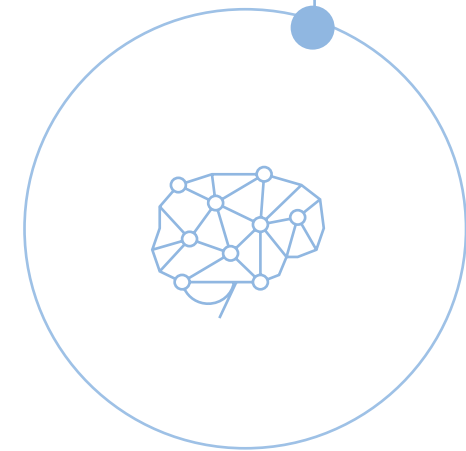
The case for a **BETTER MENTAL HEALTH ASSESSMENT**

¹ Vermani, Monica et al. "Rates of detection of mood and anxiety disorders in primary care: a descriptive, cross-sectional study." The primary care companion for CNS disorders vol. 13,2 (2011)

² AlSalem, M. et. al. Accuracy of initial psychiatric diagnoses given by nonpsychiatric physicians: A retrospective chart review. Medicine, 99(51), 2020.



RAPIDS BRINGS TOGETHER THE SCIENCE AND ART OF PSYCHIATRY TO PROMOTE DIAGNOSTIC QUALITY AND ENHANCED TREATMENT OUTCOMES BY IMPROVING CLINICIANS' KNOWLEDGE.



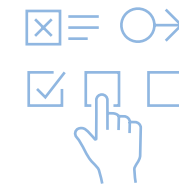
RAPIDS Guidance Report

RAPIDS is a more efficient, robust, and evidence-based means of providing clinicians with personalized treatment guidance for major depressive disorder, generalized anxiety disorder, bipolar disorder, ADHD, and insomnia.

How it works?

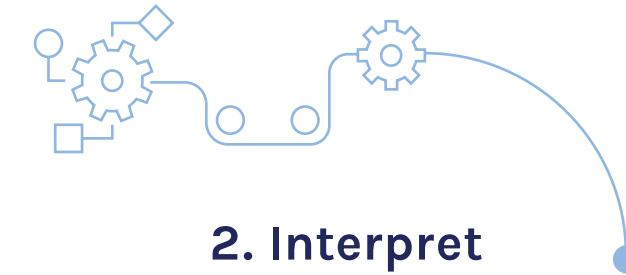
1. Collect

Medical information is provided by the patient and their clinician.



2. Interpret

RAPIDS uses an industry-standard rules engine to evaluate medical information based on validated scales and the DSM-5-TR.



3. Inform

Potential bio-psycho-social treatment options, personalized to the patient.



4. Support

RAPIDS provides support for clinical users regarding treatment guidance.

RAPIDS will:

- Support evidence-based psychiatric care
- Encourage diagnostic accuracy
- Provide guidance based in the latest science
- Improve access to timely care
- Improve clinicians' knowledge and confidence in treating major depressive disorder, generalized anxiety disorder, bipolar disorder, ADHD, and insomnia



Guidance within 5 days of completed assessment.



Inquiries:
info@rapidshealth.com

For more information, visit rapidshealth.com



RAPIDS